



**Piper Aircraft, Inc.**  
2926 Piper Drive  
Vero Beach, Florida, U.S.A. 32960

# SERVICE NO. 1244

# BULLETIN

## PIPER CONSIDERS COMPLIANCE MANDATORY

Date: November 8, 2012

(S) (M)

**SUBJECT:**

**MODELS AFFECTED:**

PA-28-140 Cherokee Cruiser

PA-28-150 Cherokee

PA-28-160 Cherokee

PA-28-180 Cherokee

PA-28S-160 Cherokee

PA-28S-180 Cherokee

PA-28-235 Cherokee Pathfinder

PA-28-235 Cherokee Pathfinder

PA-28-236 Dakota

PA-28-151 Warrior

PA-28-161 Cadet

PA-28-161 Warrior II

PA-28-161 Warrior III

PA-28-180 Archer

PA-28-181 Archer II

PA-28-181 Archer III

PA-28-201T Turbo Dakota

PA-28R-180 Arrow

PA-28R-200 Arrow

PA-28R-200 Arrow II

PA-28R-201 Arrow III

PA-28R-201T Turbo Arrow III

PA-28RT-201 Arrow IV

PA-28RT-201T Turbo Arrow IV

PA-32-260 Cherokee Six

PA-32-300 Cherokee Six

**AFT WING ATTACH FITTING INSPECTION  
REQUIREMENTS**

**SERIAL NUMBERS AFFECTED:**

28-20001 thru 28-26946;

28-7125001 thru 28-7725290

28-03; 28-1 thru 28-4377 and 28-1760A

28-03; 28-1 thru 28-4377 and 28-1760A

28-03; 28-671 thru 28-5859;

28-7105001 thru 28-7205318

28-1 thru 28-1760 and 28-1760A

28-671 thru 28-5859; 28-7105001 thru 28-7105234

28-10001 thru 28-11378; 28-7110001 thru 28-7210023

28E-11; 28-7310001 thru 28-7710089

28-7911001 thru 28-8611008; 2811001 thru 2811050;

2845001 and up

28-7415001 thru 28-7715314

2841001 thru 2841365

28-7716001 thru 28-8216300;

28-8316001 thru 28-8616057; 2816001 thru 2816109

2816110 thru 2816119; 2842001 and up

28-E13; 28-7305001 thru 28-7505260

28-7690001 thru 28-8690056; 28-8690061;

28-8690062; 2890001 thru 2890205

2890206 thru 2890231; 2843001 and up

28-7921001 thru 28-7921095

28R-30002 thru 28R-31270;

28R-7130001 thru 28R-7130013

28R-35001 thru 28R-35820;

28R-7135001 thru 28R-7135229

28R-7235001 thru 28R-7635545

28R-7737002 thru 28R-7837317;

2837001 thru 2837061; 2844001 and up

28R-7703001 thru 28R-7803373; 2803001 thru 2803012

28R-7918001 thru 28R-7918267,

28R-8018001 thru 28R-8218026

28R-7931001 thru 28R-8631005; 2831001 thru 2831038

32-03; 32-04; 32-1 thru 32-1297;

32-7100001 thru 32-7800008

32-15; 32-21; 32-40000 thru 32-40974;

32-7140001 thru 32-7940290

**MODELS AFFECTED:** (Continued)

PA-32S-300 Cherokee Six Seaplane

PA-32R-300 Lance  
 PA-32RT-300 Lance II  
 PA-32RT-300T Turbo Lance II  
 PA-32R-301 Saratoga SP

PA-32R-301 Saratoga II HP

PA-32R-301 Saratoga II HP (with Entegra)  
 PA-32R-301T Turbo Saratoga SP

PA-32-301 Saratoga

PA-32-301T Turbo Saratoga  
 PA-32R-301T Saratoga II TC  
 PA-32-301FT Piper 6X  
 PA-32-301XTC Piper 6XT  
 PA-32-301XTC Piper 6XT (with Entegra)

PA-34-200 Seneca  
 PA-34-200T Seneca II  
 PA-34-220T Seneca III

PA-34-220T Seneca IV  
 PA-34-220T Seneca V

PA-44-180 Seminole

PA-44-180T Seminole

**SERIAL NUMBERS AFFECTED:** (Continued)

32S-15; 32S-40000 thru 32S-40974;  
 32S-7140001 thru 32S-7240137  
 32R-7680001 thru 32R-7880068  
 32R-7885002 thru 32R-7985106  
 32R-7787001; 32R-7887002 thru 32R-7987126  
 32R-8013001 thru 32R-8613006;  
 3213001 thru 3213028; 3213030 thru 3213041  
 3213029; 3213042 thru 3213103;  
 3246001 thru 3246017; 3246218 and up  
 3246218 and up  
 32R-8029001 thru 32R-8629008;  
 3229001 thru 3229003  
 32-8006002 thru 32-8606023;  
 3206001 thru 3206019; 3206042 thru 3206044;  
 3206047; 3206050 thru 3206055; 3206060  
 32-8024001 thru 32-8424002  
 3257001 and up  
 3232001 and up  
 3255001 and up  
 3255001 and up  
 34-E4; 34-7250001 thru 34-7450220  
 34-7570001 thru 34-8170092  
 34-8133001 thru 34-8633031;  
 3433001 thru 3433172; 3448001 thru 3448037  
 3448038 thru 3448079; 3447001 thru 3447029  
 3449001 and up  
 44-7995001 thru 44-8195026;  
 4495001 thru 4495013; 4496001 and up  
 44-8107001 thru 44-8207020

**COMPLIANCE TIME:**

Upon reaching two thousand (2,000) operating hours or seven (7) calendar years time-in-service, whichever occurs first, initial inspection to coincide with the next regularly scheduled maintenance event.

Thereafter, compliance to be accomplished on a recurring basis, at an interval not to exceed two thousand (2,000) operating hours or seven (7) calendar years time-in-service, whichever occurs first.

**APPROVAL:**

The technical content of this Service Document has been shown to comply with the applicable Federal Aviation Regulations and is FAA approved.

**PURPOSE:**

This Service Bulletin provides specific instructions for the recurring inspection of the aft wing attach fittings and adjacent structure for corrosion.

**INSTRUCTIONS:**

**NOTE:** Refer to the applicable Piper Maintenance Manual for model specific details.

**NOTE:** Instructions that follow apply to both left and right wings.

**NOTE:** Refer to the following document (available for download at <http://www.airweb.faa.gov>) for additional information:

- FAA Advisory Circular AC43-4A "Corrosion Control for Aircraft"

1. Remove wing inspection plates and fairings, as required to gain visual access to the aft wing attach fittings.

**NOTE:** The access and inspection provisions for the airplane are typically shown in the applicable maintenance/service manual. In maintenance manuals, see Chapter 6. In service manuals, see Section II. All access plates and panels are secured by either metal fasteners or screws. "Access plates and panels" includes all forms of covers, cowlings, fairings, plates, panels, tips, etc. which may be removed for access to any component or space.

2. Identify the aft wing attach fittings which are riveted to the aft wing spars. See Figure 1. Using a solvent-based degreaser spray that conforms to SAE AMS 1525 (such as LPS Presolve Orange Degreaser) and/or an alkaline cleaner that complies with SAE AMS 1526 (such as Chemetall Ardrex 6333A), thoroughly clean the aft wing attach fittings and the adjacent wing spar structure (fore and aft sides of each wing spar), removing surface oil, grease, loose paint, and soil, followed by a clean water rinse and dry.
3. Carefully inspect for evidence of corrosion. The initial stages of corrosion are often masked by paint coatings and hidden under faying surfaces such as riveted lap joints. Since corrosion products occupy more volume than the original metal, carefully inspect these areas for irregularities such as blisters, flakes, chips, lumps, bulging skins and missing rivets.
  - a. If corrosion is superficial, and there is no metal flaking and/or pitting, clean and paint affected areas using a good quality aircraft primer that complies with MIL-PRF-23377 (such as Akzo-Nobel 10P30-5).
  - b. The repair procedure described in step 3a above is limited to the treatment of minor corrosion. Minimum acceptable part thicknesses after removal of corrosion are as follows:

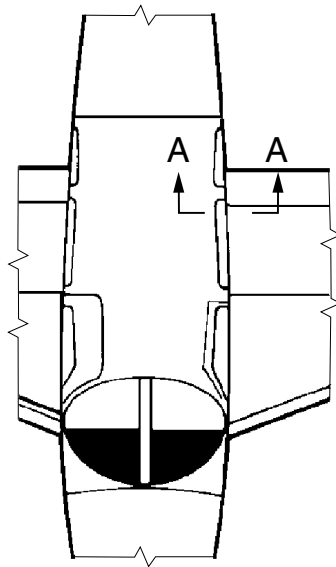
PART DESCRIPTION	MINIMUM THICKNESS
Aft wing spar (aluminum)	0.060 inches
Aft wing attach fitting (steel)	0.117 inches

Thickness measurements shall be accomplished using a nondestructive inspection method, such as ultrasound, eddy current, or equivalent, with a measurement accuracy of +/- 0.005 inches or better. If the remaining part thickness is less than the limits shown above, replacement of parts and/or additional structural repairs are required prior to next flight. For guidance, contact Piper Aircraft at (772) 299-2141. Piper normal business hours are 7:30 AM to 4:30 PM EST, Monday through Friday.

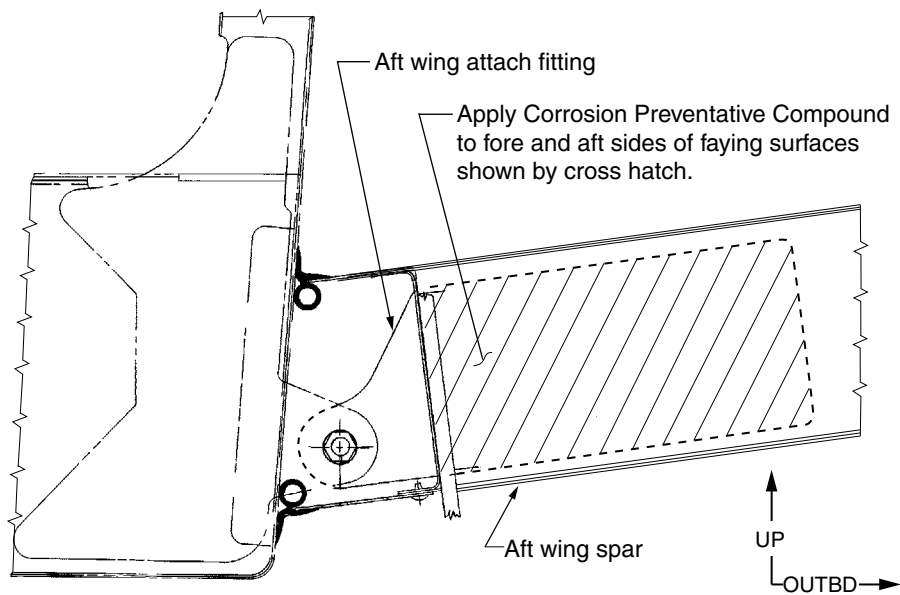
4. Upon completion of this inspection and after replacement or refurbishment of fittings and adjacent structure, treat the area identified in Figure 1, View A-A, with Ardrex (Dinitrol) AV8, or other MIL-PRF-16173 Class I or II, Grade 1 or 4 compliant Corrosion Preventive Compound (procure locally, or order Piper part number (P/N) 89500-800). The treatment may be brushed or sprayed.

**NOTE:** Verify that all drain holes and drain passages are clear before proceeding.

5. Reinstall inspection plates and fairings. Perform a functional test of any system or component that may have been disconnected or removed.
6. Make a logbook entry indicating compliance with this Service Bulletin.



**Figure 1**  
Aft wing attach fitting location



**VIEW A-A**  
LOOKING AFT AT LEFT HAND SIDE

**MATERIAL REQUIRED:**

<b><u>Qty</u></b>	<b><u>Piper P/N</u></b>	<b><u>Nomenclature</u></b>
A/R*	89500-800	Ardrox (Dinitrol) AV 8 Corrosion Preventative Compound

\*Quantity is as required.

**Procure locally:**

LPS Presolve Orange Degreaser (SAE AMS 1525) or equivalent

Chemetall Ardrox 6333A (SAE AMS 1526) or equivalent

Akzo-Nobel 10P30-5 (MIL-PRF-23377) or equivalent

**AVAILABILITY OF PARTS:** Your Piper Service Facility.

**EFFECTIVITY DATE:** This Service Bulletin is effective upon receipt.

**SUMMARY:** Please contact your Factory Authorized Piper Service Facility to make arrangements for compliance with this Service Bulletin in accordance with the compliance time indicated.

**NOTE:** Please notify the factory of any address/ownership corrections. Changes should include airplane model, serial number, current owner's name and address.

Corrections and/or changes should be directed to:

PIPER AIRCRAFT, INC.  
Attn: Customer Service  
2926 Piper Drive  
Vero Beach, FL 32960